

Getting Started with Microsoft Authenticator



**Microsoft
Authenticator**
Microsoft Corporation

- **Multi-Factor Authentication (MFA)**
 - MFA is a security standard of verifying at least 2 of the below types of information:
 - Things you know (username and password)
 - Things you have (mobile phone, an app or email address)
 - Things you are (face recognition, fingerprint)
 - Microsoft Authenticator can also save all your personal passwords on your phone

Download and Install Microsoft Authenticator on your mobile



iOS

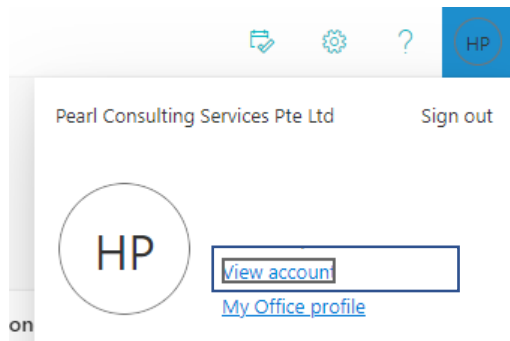


Android

Setting up Microsoft Authenticator



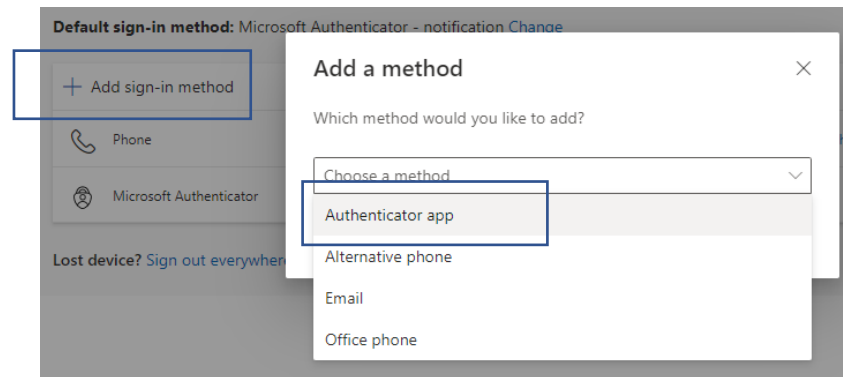
1. Go to office.com on your laptop/tablet and sign in with your Pearl email address.
2. Click on your initial (top right corner) > View Account.



3. Click on 'Update Info' under the Security Info section. You will be prompted to sign in again.



4. Add sign-in method > choose Authenticator App > follow the prompts. Microsoft will generate a QR code for you.



5. On your mobile, open the Authenticator App > add Work or School Account > Scan QR Code. You will be prompted to Approve sign-in.

***This is a one-time setup. Next time you try to sign-in, you only need to click approve on your phone.**
****Don't approve MFA prompts if you are unsure what it is for.**